

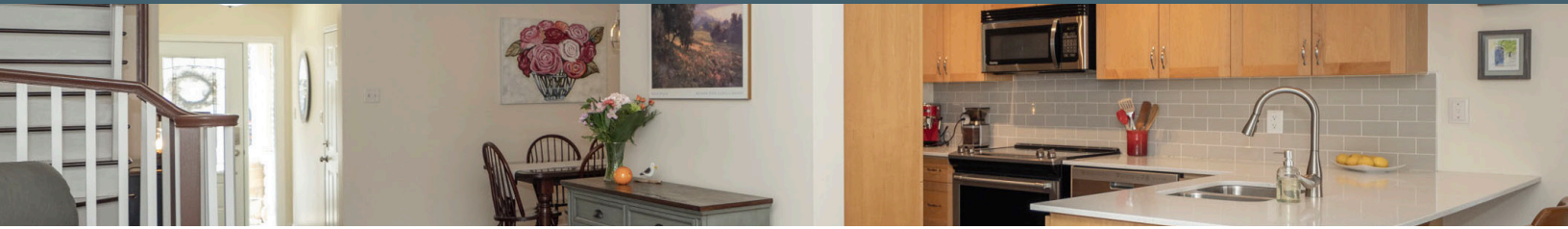


19 goldthorpe private

STONEBRIDGE • 3 BEDROOMS • 3 BATHROOMS • MLS: 1375887

ROYAL LePAGE
Team Realty
hammer
ASSOCIATES, BROKERAGE
INDEPENDENTLY OWNED AND OPERATED. BROKERAGE

DANA.PALOMBO
@RACHELHAMMER.COM
BROKER
613-369-8314



19 goldthorpe private

STONEBRIDGE · 3 BEDROOMS · 3 BATHROOMS · MLS: 1375887

Includes

Refrigerator, Stove, Microwave/Hood Fan, Dishwasher, Washer, Dryer, All Light Fixtures, Window Blinds, Drapes & Drapery Tracks

Excludes

Freezer in Basement

Taxes

\$4,370.00/2023

Approximate Monthly Utility Costs

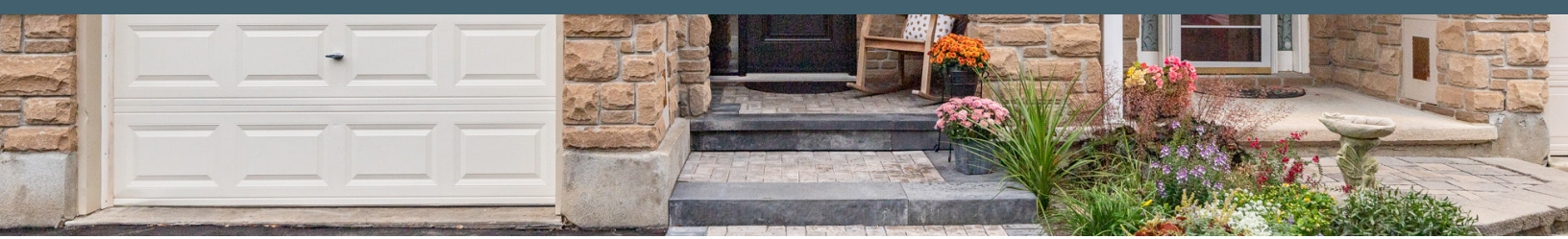
Hydro \$97.79, Heat \$68.81, Water \$74.03

Approximate Age of

Roof, Windows, AC & Furnace 2004

Why the Sellers Love this Home & Neighbourhood

One of our favourite things about the home is the wall of windows at the back of the house overlooking the beautiful green space. It feels like living in a park with lots of interesting birds, such as cardinals, woodpeckers, owls and hawks. In terms of the neighbourhood, the street is very quiet with little traffic. Neighbours are always willing to help each other out, whether it's checking on each other's homes or shoveling driveways. Proximity to Manotick's restaurants, cafes and sites such as Watsons Mill is amazing.



19 goldthorpe private

STONEBRIDGE · 3 BEDROOMS · 3 BATHROOMS · MLS: 1375887

- > Interlock steps (2020) next to a stunning front garden lead you to the cozy porch and entryway with new light fixtures (2022).
- > Rich hardwood floors stretch throughout the spacious dining room and open living room flooded with natural light from tall windows with a private view.
- > Light maple cabinetry meets quartz countertops and luxury vinyl tiles (2019) in the kitchen with stainless steel appliances (2019), pot lights and subway tile backsplash.
- > Two-tiered cedar deck (2013) overlooking perennial gardens and mature trees, with no rear neighbours and brand-new fencing (2023).
- > Three spacious bedrooms with environmentally friendly cork flooring, ready to accommodate kids, guests or a home office space. Your primary suite with custom blinds (2019) boasts a large walk-in closet and ensuite.
- > Newly painted (2023) family room on the lower level with heated tile floors and pot lights (2013).



We invite you to view
additional photos,
video & dimensions
on our website



Contact me
about this
listing!

